

STABLE | ENERGY-SAVING | CLEAN | AND EFFICIENT

DMWV/DMW-G Dry oil-free Screw air compressor



Dream (Shanghai) Compressor Co.,Ltd.

📍 (International Sales & Operation Center) Room 316, 3rd Floor,
Building 1, Lane 288, Rongxing Road, Zhongshan Street,
Songjiang District, Shanghai

(Zhejiang Manufacturing Center) No. 916, Chuangzhi Road, Xindai Town,
Pinghu City, Jiaxing City, Zhejiang Province

☎ 86-13671551445

✉ sales@dmcomp.com

WeChat QR code



Facebook Company Page



www.dreamcompressor.com
www.dmcomp.com

Dream(Shanghai) Compressor Co.,Ltd.

01



DMWV-G series
Dry oil-free permanent magnet variable frequency
Screw air compressor

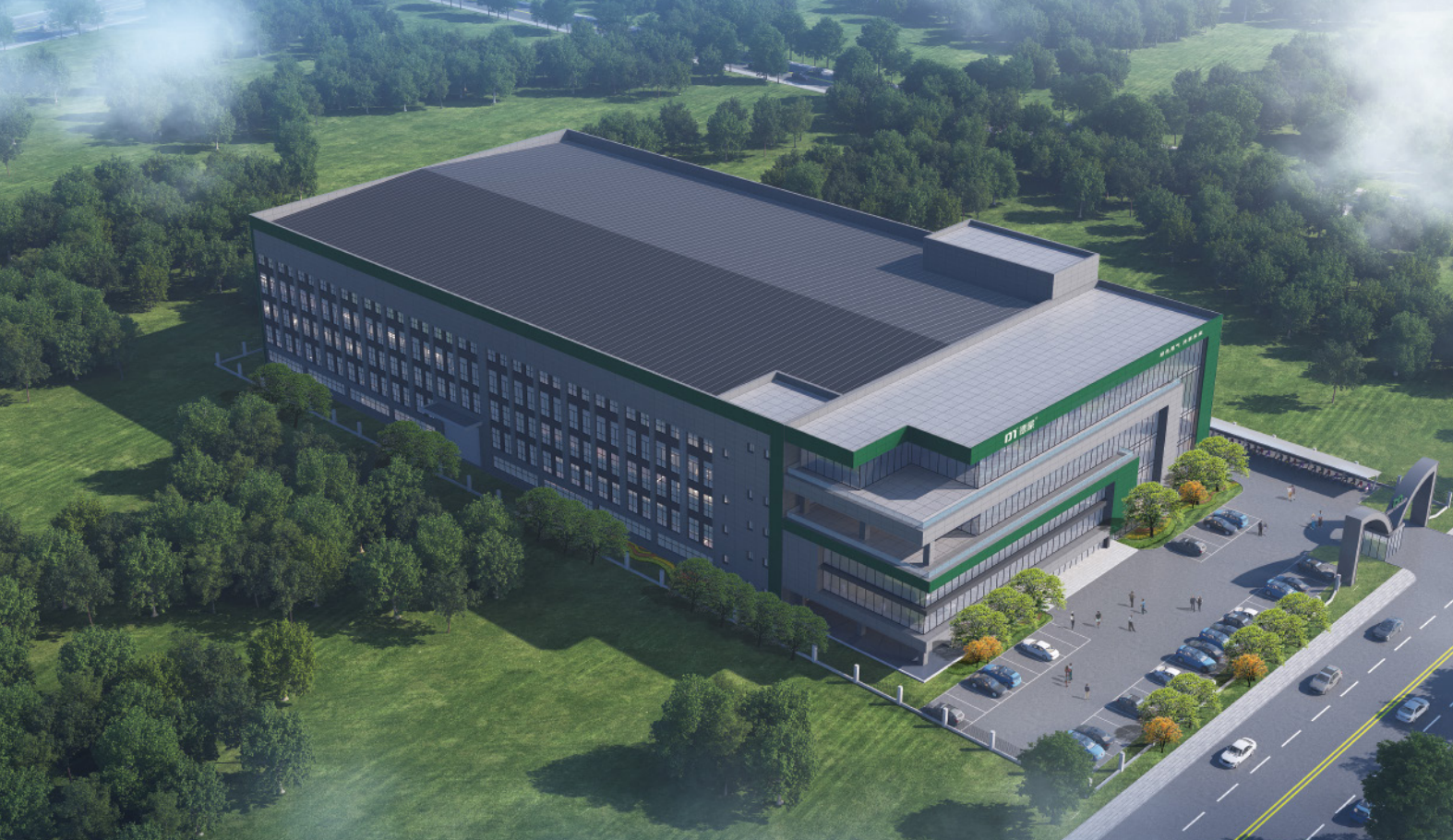
02



DMW-G series
Dry oil-free industrial frequency
Screw air compressor

Catalogue／

- 01 About DREAM
- 02 DREAM culture
- 03 Corporate Honors
- 05 DREAM Intelligent Manufacturing
- 07 Product Features
- 09 DMWV-G series Dry oil-free permanent magnet variable frequency Screw air compressor
- 11 DMW-G series Dry oil-free industrial frequency Screw air compressor
- 13 Product Applications
- 15 Energy saving and cost reduction
- 17 Intelligent control technology



ABOUT DREAM

 **45000** m²
factory area

 **100+**
Invention patents and honors

 **20+**
Regional branches/subsidiaries

Dream (Shanghai) Compressor Co., Ltd. which established in Shanghai in 2011. It is a company specialized in designing, manufacturing and marketing of air compressors, is A high-tech enterprise that sells and provides system solutions.

It has won honors such as Shanghai Brand Cultivation Demonstration Enterprise, special new enterprise, energy-saving equipment contribution enterprise, high-tech achievement transformation project, etc. The products are widely used in new energy, chemical industry & chemistry, Electronics, textiles, brewing mill, laser cutting, medicine & food and other fields.

Based on concepts of stable, energy-saving, clean, efficiency, simple operation & maintenance, DREAM insists on developing based on market demand and innovation. The company invests 10%-15% of its profits every year into R&D and the upgrading & optimization of products. Innovation is main driver for DREAM grow up. As manufacturer supplier of Air compressor system solutions, Our service cover client requirement analysis, site investigation, technical solution design, and project cost analysis, non-standard solution customization, solution demonstration and promotion. we provide exclusive compressed gas solutions based on project needs.

After development for 14+ years, Dream has always adhered to the enterprise spirit of "One heart One Dream, striving for excellence", constantly innovating and pursuing excellence. Dream people continue to explore and innovate to meet customer needs and provide users with better products and service. Based in China, Dream's products has exported to worldwide countries successfully, mainly market as South Asia, South East Asia, Europe, Africa, South America, North America, and CIS countries, footprints all over the world. Its excellent product performance and efficient service concept continue to create value for users.

Dream will be always your trust partner. We believe that you will experience our high-quality products and professional services, by working with us. Welcome to pursue dream and create better future with DREAM together!

DREAM CULTURE



Vision

To be a global leader in gas compression intelligent equipment and system solutions service provider



Mission

Make Industry Air More Stable, More Clean, More Efficient



Value

One Heart. One Dream. Professional. Focus. Innovative. Win-win.

Enterprise honor

- High-tech enterprise
- Specialized in special new enterprises
- Energy-saving technology and equipment contributing enterprises
- Shanghai brand cultivation model enterprise
- CE Certificates
- EMC Certificates
- TUV Rheinland Class 0 Oil Free Certificates
- Germany TUV product safety certification
- GCCA product quality and safety certification
- ISO 9001,14001,45001



Adhering to the business philosophy of "market-oriented,customer-centric,technical support and service guarantee",Dream is committed to providing customers with high quality products and industry-leading services. With Shanghai as the center and 20 service outlets nationwide as the auxiliary,Dream covers 34 provinces and autonomous regions of China's sales and service network,dedicated to provide customers with better service.

Global service

Dream is committed to providing quality products and services on a global scale,and has conducted overseas operations in many countries and regions,including Southeast Asia,Eu-rope,and the Americas,and has established strong partnerships in overseas markets. Our overseas agents have rich experience in cross-cultural communication and international vision,and are able to better understand and meet the needs of local customers and markets. In the future,we will continue to strengthen the development of overseas business,expand more overseas markets,and let China intelligent manufacturing shine on the international stage.



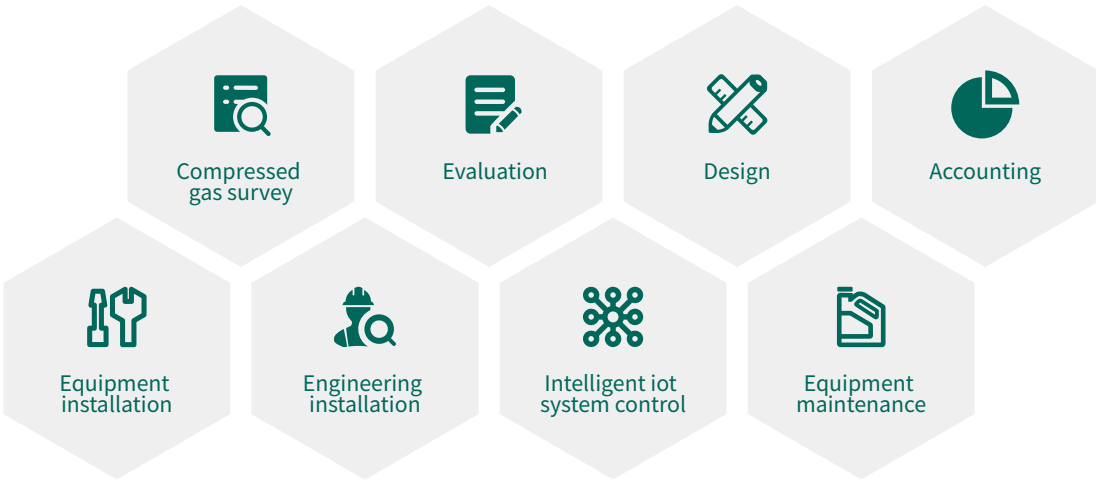
Dream Intelligent Manufacturing
Six core competencies



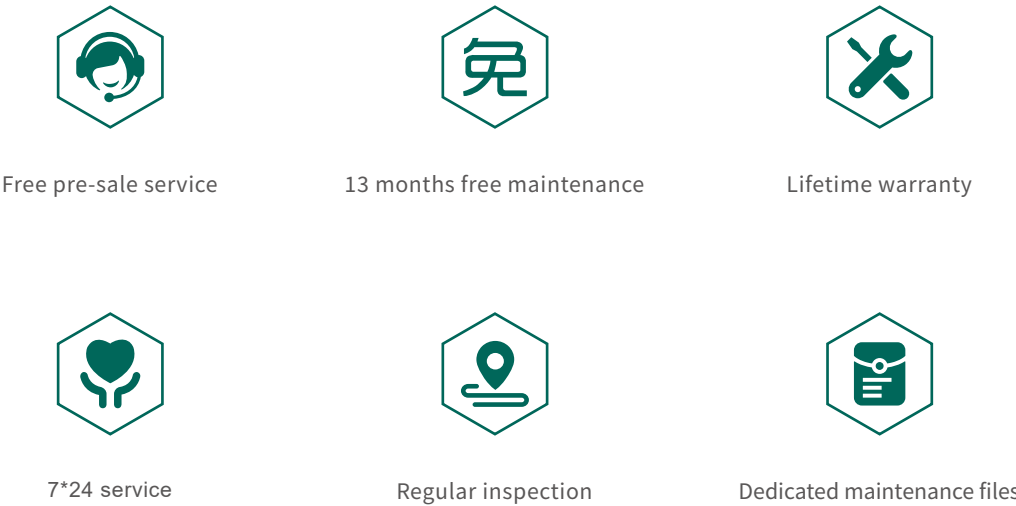
| Full process cycle and service

We provide the whole process cycle service for customers to build gas stations or upgrade,covering compressed gas system research,evaluation,design,edge calculation,equipment installation,engineering installation,intelligent iot system control,equipment maintenance and so on.

| Service process

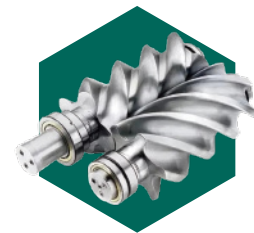


| Performance pledge



Dry oil-free permanent magnet variable frequency screw air compressor

Product Features



Imported oil-free airend

- 1.The air compression chamber is completely separated from the oil chamber, and the two do not touch each other
- 2.The secondary rotor is made of stainless steel, which is more reliable.
- 3.The rotor and the inner wall of the compression chamber of the airend are coated with the industry's first-class super coating (UITRACOAT). It can effectively prevent the softening and shedding of general coatings such as Teflon. It has excellent anti-corrosion and reduces the meshing clearance. There is no obvious decrease in gas volume during the entire life cycle.
- 4.The housing compartment of the airend is cooled with filtered lubricating oil. Efficient cooling avoids the generation of scale by cooling with water.



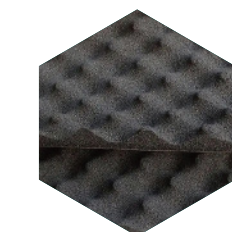
Permanent magnet variable frequency electric control system

Large-size color LCD touch screen, with good human-machine communication interface; customized vector inverter, perfectly matched with the motor; Special program, fully monitors various parameters of the machine, automatically controls the machine status, no need for special personnel to watch; independent air duct design, suitable for various working conditions.



Independent air intake system

Independent air intake ensures that the intake air temperature is equal to the ambient temperature. Use large residual air filter, better filtering effect, lower intake air pressure loss, energy saving and high efficiency. Maintenance and replacement are more convenient.



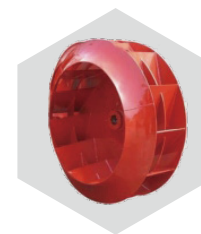
Noise reduction sheet metal design

Multiple noise reduction designs, calculated according to noise science, with special flame-retardant silencer cotton pasted inside to reduce unit noise and provide a quieter use environment.

DMWV-G series Dry oil-free permanent magnet variable speed screw air compressor

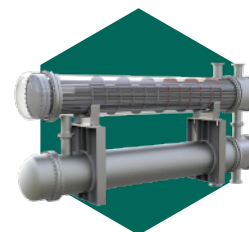


DMW-G series Dry oil-free power frequency screw air compressor



Silent centrifugal fan

DREAM dry screw air compressor uses the latest centrifugal fan, which has large cooling air volume, low noise, stable and uniform air pressure, making full use of the cooling area of the cooler and greatly reducing the noise of the air compressor by 6-8dB(A), providing customers with a quiet environment.



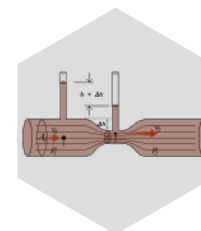
High-efficiency water cooler

The water cooler adopts a new type of threaded fin tube shell and tube heat exchanger. The compressed air flows through the tube, the cooling water flows through the shell side, and the tube nest is a new type of plum blossom copper tube. Compared with conventional water-cooled heat exchangers, it has the following advantages:

- 1.Compressed air flows through the tube side, and the pressure bearing capacity is improved;
 - 2.The cooling water flows through the shell side. The cooling water passes through multiple groups of baffles, and its turbulence degree is improved, and the probability of dirt attached to the tube wall is reduced, which prolongs the equipment cleaning cycle and reduces the user's maintenance cost;
 - 3.The gas flows through the tube side and the fins extend axially in the tube. It is safe and reliable to use, and the fins are not easy to fall off;
 - 4.The installation of the heat exchanger is simple, which is the same as that of the conventional shell and tube heat exchanger;
 - 5.The tube side uses stainless steel sheet to prevent the cooler from corroding and rusting due to high temperature and high pressure, affecting the life of the compressor main engine and air quality;
 - 6.The tube nest can be disassembled independently, which is convenient for users to maintain;
- The compressed air flows through the tube side, and the water flows through the shell side, which reduces the noise generated by the compressed air.

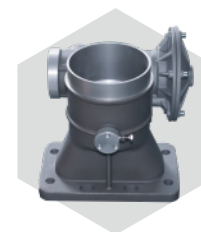
10.Noise-reducing Venturi tube

The first and second stage air compressors all use the latest developed Venturi tube silencers, as well as impedance integrated silencers, which can greatly eliminate the noise emitted by the compressor pipeline.



Noise-reducing Venturi tube

The first and second stage air compressors all use the latest developed Venturi tube silencers, as well as impedance integrated silencers, which can greatly eliminate the noise emitted by the compressor pipeline.



Reliable air intake system

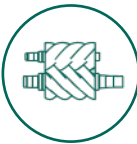
High-efficiency air intake valve, more stable and reliable operation, avoids regular replacement of pneumatic components, reduces unnecessary downtime and maintenance costs



DMWV-G series

Dry oil-free permanent magnet variable speed screw air compressor

Adopting German technology and oil-free main engine,it is a highly environmentally friendly,oil-free machine certified by German TUV CLASS 0.Highly energy-efficient dry oil-free screw air compressor.



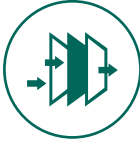
German imported host



TUV Rheinland Class Certification
Oil Free



Permanent magnet synchronous motor
efficiency Reach IE5 level



Low pressure loss and
large air filter design



All stainless steel design



Highly efficient gas-water
separation



Oil mist separation
without air consumption



Silent centrifugal
fan design

GREEN ENERGY SHARED DREAM

DMWV-G series	working pressure		capacity		power		noise	Air outlet pipe diameter	net weight kg		dimensions(mm)					
	bar	psig	(m³/min)	cfm	kW	hp	dB		Air-cooled	water-cooled	length	width	height	length	width	height
											Air-cooled			water-cooled		
DMWV-37G	8	116	3.6-5.6	127-198	37	50	69±3	G1 1/2"	1800	1950	2000	1300	1820	2200	1500	1720
DMWV-45G	7	102	4.5-7.8	159-275	45	60	69±3	G1 1/2"	1800	1850	2000	1300	1820	2200	1500	1720
	8	116	4.0-6.8	141-240												
	10	145	3.7-6.4	132-226												
DMWV-55G	7	102	5.7-9.8	202-346	55	75	69±3	G1 1/2"	1900	1950	2000	1300	1820	2200	1500	1720
	8	116	5.2-9.0	182-318												
	10	145	4.4-7.8	157-275												
DMWV-75G	7	102	7.6-13.0	268-459	75	100	70±3	DN50	2000	2050	2200	1400	2000	2200	1500	1720
	8	116	7.2-12.2	253-431												
	10	145	6.6-11.2	234-396												
DMWV-90G	7	102	9.6-16.0	332-565	90	120	71±3	DN50	2100	2150	2200	1400	2000	2200	1500	1720
	8	116	8.1-13.8	286-487												
	10	145	7.6-13.1	269-463												
DMWV-110G	7	102	12.1-20.6	429-727	110	150	71±3	DN65	3100	3150	3000	1990	2180	2800	1900	1990
	8	116	11.6-19.5	408-689												
	10	145	11.1-18.8	391-664												
DMWV-132G	7	102	14.7-24.8	518-876	132	175	73±3	DN65	3200	3250	3000	1990	2180	2800	1900	1990
	8	116	13.6-23.0	480-812												
	10	145	11.5-19.5	406-689												
DMWV-160G	7	102	16.9-28.5	596-1006	160	215	73±3	DN65	3300	3400	3000	1990	2180	2800	1900	1990
	8	116	15.6-26.3	550-929												
	10	145	14.1-23.8	497-840												
DMWV-185G	7	102	19.5-32.8	687-1158	185	250	74±3	DN65	3400	3500	3000	1990	2180	2800	1900	1990
	8	116	17.1-28.9	605-1021												
	10	145	16.3-27.5	575-971												
DMWV-200G	7	102	21.8-36.8	768-1300	200	270	74±3	DN100	5570	5000	4500	2000	2150	3100	2200	2103
	8	116	20.4-34.6	721-1222												
	10	145	18.1-30.6	640-1081												
DMWV-220G	7	102	24.9-41.5	879-1466	220	300	74±3	DN100	5600	5100	4500	2000	2150	3100	2200	2103
	8	116	22.4-37.3	790-1317												
	10	145	19.8-33	699-1165												
DMWV-250G	7	102	27.3-46.0	964-1624	250	350	74±3	DN100	5800	5200	4500	2000	2150	3100	2200	2103
	8	116	25.3-42.8	893-1511												
	10	145	22.7-38.2	803-1348												
DMWV-280G	7	102	31.6-48.6	1116-1716	280	375	76±3	DN100	5900	5300	4500	2000	2150	3100	2200	2103
	8	116	30.9-47.5	1090-1677												
	10	145	29.3-45	1033-1589												
DMWV-315G	7	102	34.1-52.5	1205-1854	315	422	77±3	DN100	6000	5400	4500	2000	2150	3100	2200	2103
	8	116	32.9-50.6	1161-1787												
	10	145	31.5-48.5	1113-1713												



DMW-G series

Dry oil-free power frequency screw air compressor

Imported oil-free main engine, it is a high environmental protection and high energy efficiency that has passed the German TUV CLASS 0 oil-free certification Dry oil-free screw air compressor.



German imported host



TUV Rheinland Class Certification
Oil Free



Permanent magnet synchronous motor
efficiency Reach IE5 level



Low pressure loss and large air filter design



All stainless steel design



Highly efficient gas-water separation



Oil mist separation without air consumption



Silent centrifugal fan design

DMW-G series	working pressure		capacity		power		noise	Air outlet pipe diameter	net weight kg		dimensions(mm)					
	bar	psig	(m³/min)	cfm	kW	hp	dB		Air-cooled	water-cooled	length	width	height	length	width	height
											Air-cooled			water-cooled		
DMW-37G	8	116	5.6	197.7	37	50	69±3	G1 1/2"	1900	1950	2000	1300	1820	2200	1500	1720
	7	102	7.8	275.5												
DMW-45G	8	116	6.8	240.1	45	60	69±3	G1 1/2"	1900	1950	2000	1300	1820	2000	1500	1720
	10	145	6.4	226.2												
DMW-55G	7	102	9.8	346.1												
	8	116	9.0	317.8	55	75	69±3	G1 1/2"	2000	2050	2000	1300	1820	2200	1500	1720
	10	145	7.8	275.5												
DMW-75G	7	102	13.0	459.1												
	8	116	12.2	430.8	75	100	70±3	DN50	2150	2200	2200	1400	2000	2200	1500	1720
	10	145	11.2	395.5												
DMW-90G	7	102	16.0	565.0												
	8	116	13.8	487.3	90	120	71±3	DN50	2250	2300	2200	1400	2000	2200	1500	1720
	10	145	13.1	462.6												
DMW-110G	7	102	20.6	727.5												
	8	116	19.5	688.6	110	150	71±3	DN65	3360	3400	3000	1990	2180	2800	1900	1990
	10	145	18.8	663.9												
DMW-132G	7	102	24.8	875.8												
	8	116	23.0	812.2	132	175	73±3	DN65	3500	3550	3000	1990	2180	2800	1900	1990
	10	145	19.5	688.6												
DMW-160G	7	102	28.5	1006.5												
	8	116	26.3	928.8	160	215	73±3	DN65	3750	3850	3000	1990	2180	2800	1900	1990
	10	145	23.8	840.5												
DMW-185G	7	102	32.8	1158.3												
	8	116	28.9	1020.6	185	250	74±3	DN65	3860	3960	3000	1990	2180	2800	1900	1990
	10	145	27.5	971.2												
DMW-200G	7	102	36.8	1299.6												
	8	116	34.6	1221.9	200	270	74±3	DN100	5730	5230	4500	2000	2150	3100	2200	2103
	10	145	30.6	1080.6												
DMW-220G	7	102	41.5	1465.6												
	8	116	37.3	1317.2	220	300	74±3	DN100	6000	5500	4500	2000	2150	3100	2200	2103
	10	145	33.0	1165.4												
DMW-250G	7	102	46.0	1624.5												
	8	116	42.8	1511.5	250	350	74±3	DN100	6400	6000	4500	2000	2150	3100	2200	2103
	10	145	38.2	1347.7												
DMW-280G	7	102	48.6	1716.3												
	8	116	47.5	1677.4	280	375	76±3	DN100	6500	6100	4500	2000	2150	3100	2200	2103
	10	145	45.0	1589.2												
DMW-315G	7	102	52.5	1854.0												
	8	116	50.6	1786.9	315	422	77±3	DN100	6600	6200	4500	2000	2150	3100	2200	2103
	10	145	48.5	1712.8												
DMW-355G	7	102	65.0	2295.5												
	8	116	59.0	2083.6	355	476	78±3	DN150	/	6250	/	/	/	5000	2400	2400
	10	145	52.2	1843.4												
DMW-400G	7	102	75.4	2662.7												
	8	116	67.0	2366.1	400	536	78±3	DN150	/	6300	/	/	/	5000	2400	2400
	10	145	58.9	2080.0												
DMW-450G	7	102	78.5	2772.2												
	8	116	77.3	2729.8	450	600	79±3	DN150	/	6800	/	/	/	5000	2400	2400
	10	145	66.5	2348.4												
DMW-500G	7	102	86.2	3044.1												
	8	116	85.3	3012.3	500	670	79±3	DN150	/	7200	/	/	/	5000	2400	2400
	10	145	78.0	2754.5												
DMW-560G	10	145	85.0	3001.7	560	760	79±3	DN150	/	7200	/	/	/	5000	2400	2400

Application scenarios

In hospitals, many medical and related equipment require air compressors to provide compressed air sources, such as some medical and health care equipment, dental equipment, respiratory equipment, etc. These gases are in direct contact with the human body, so the selected air compressor must be an oil-free air compressor. Food industry: The compressed air produced by oil-free air compressors is mainly used for mechanical power actuators on assembly lines or some manipulators with basic functions, and some is used for instrumentation. Since it is in direct or indirect contact with food, a fully oil-free series air compressor is required.



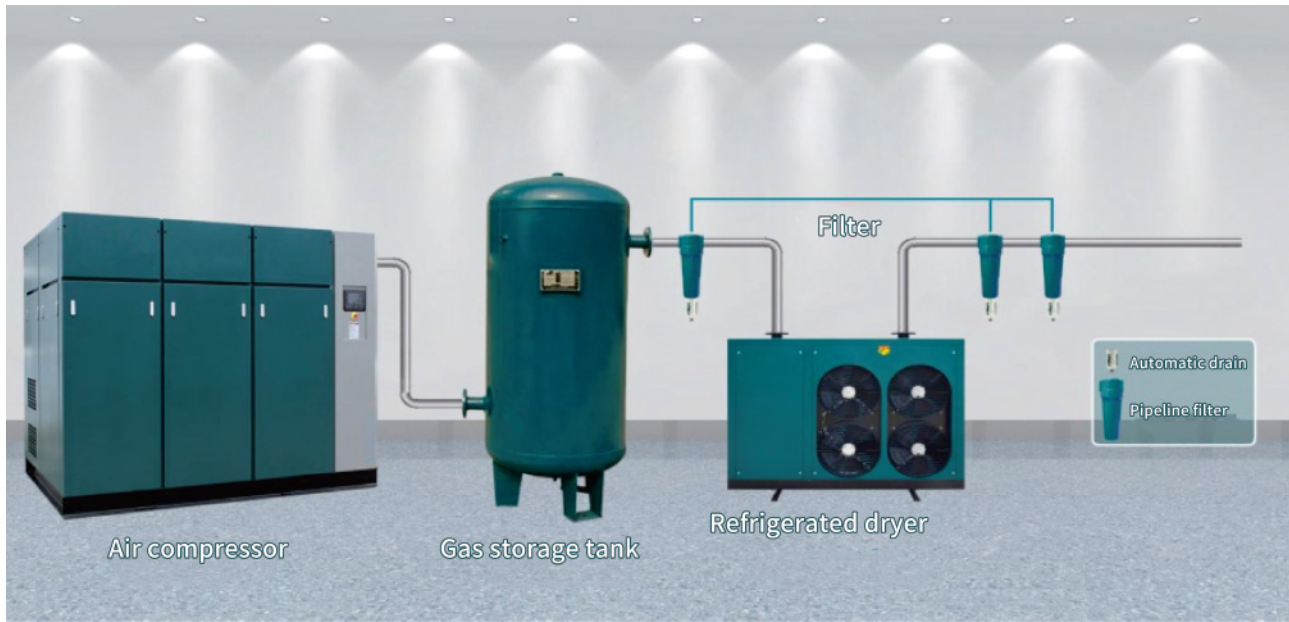
Product Cases



In response to the local government's strengthening of environmental protection supervision and management, and fulfilling environmental protection responsibilities, a company voluntarily eliminated various unqualified equipment, including air compressors. Actively looking for energy-saving and environmentally friendly air compressors that meet the requirements, and finally chose the DMW series units of DMW after being recommended by DMW's professional sales engineers. The DMW series units meet environmental and environmental requirements, meet the gas consumption of customers, and are more energy-saving, more environmentally friendly, and more stable than general screw machines.

Total Solution

DREAM Air Compressor is committed to providing integrated compressed air solutions and one-stop services to meet the needs of various industries for high-quality compressed air. Demon Air Compressor has a full range of models, including piston, screw, vortex, micro-oil, oil-free, water-lubricated, industrial frequency, variable frequency, permanent magnet variable frequency belt, direct connection, integrated machine, single-stage compression, two-stage compression, fixed machine, mobile machine, low pressure, medium pressure (normal pressure), high pressure, etc., post-processing equipment and other 17 product series, involving more than 500 products for customers to choose.



Energy Conservation

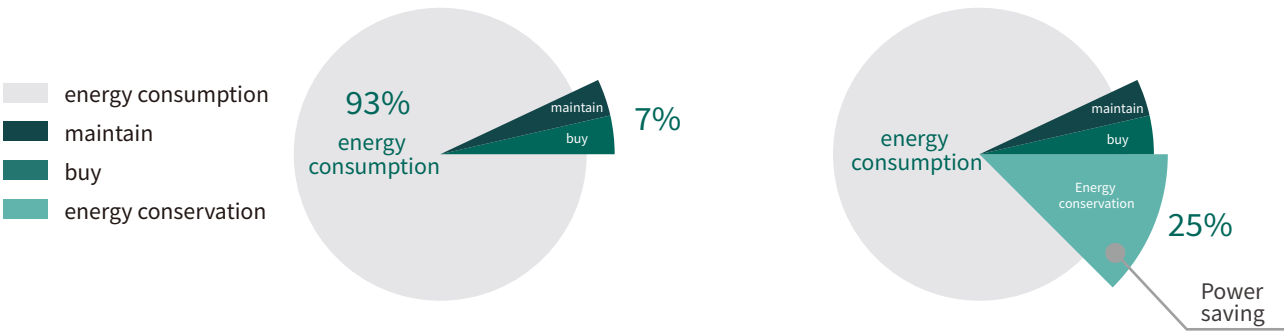
Air compressors are the "electric tigers" in industrial electricity consumption,with an average power consumption of 20%. We have made a series of efforts and research on how to use the same electricity to create more air to help users save energy,and have made important breakthroughs. The permanent magnet variable frequency screw machine developed by the company can save users about 25-35% of electricity while ensuring the original work efficiency.



Energy saving and cost reduction

When purchasing an air compressor,the traditional cost (i.e. purchase cost+maintenance cost) only accounts for 7% of the total cost,while energy consumption accounts for 93%. The two-stage compression direct connection/permanent magnet screw air compressor saves 25-30% energy compared to ordinary (power frequency) air compressors.

— aking 75KW as an example



intelligent control

Rust proof shell

Efficient and energy-saving

Constant current and stable voltage

Easy to use and worry free


reduce the noise





Desmond 75KW air compressor
It saves about 25% of electricity a year

Intelligent control technology

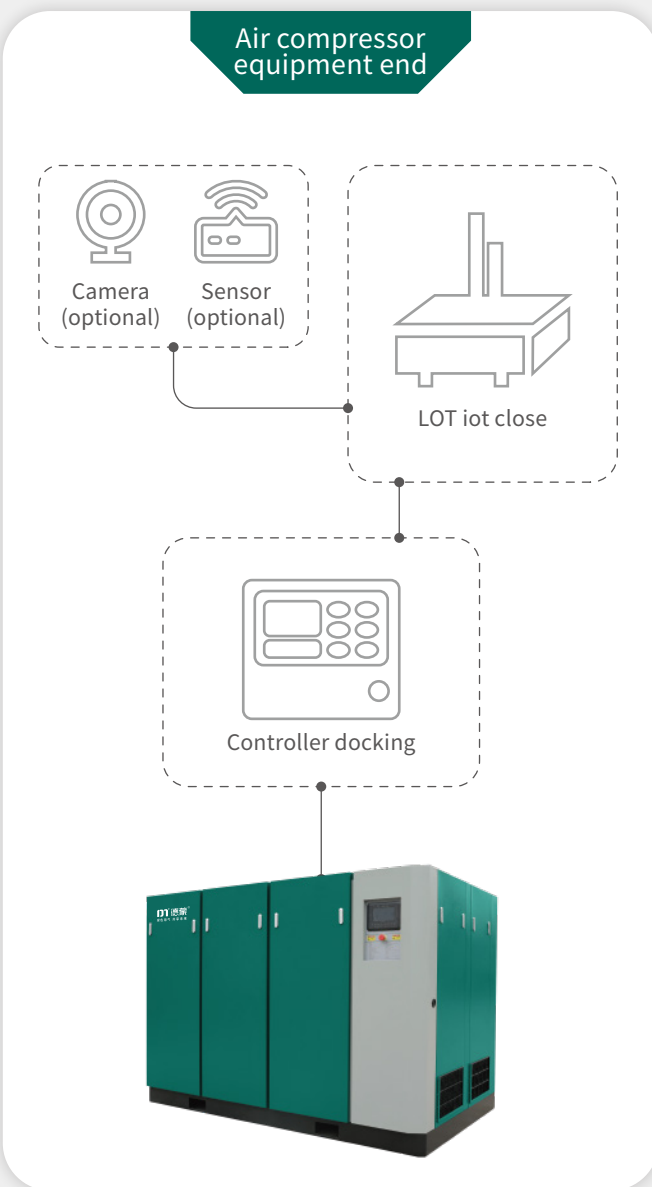
cloud intelligent control three functions and value

- 

Digital station intelligent control
reduce operation and maintenance costs by 10-30%
-- 3D virtual air compressor station
-- data Min monitoring
-- workshop diagnosis report
-- fault online prezi
-- maintenance cycle reminder
- 

Intelligent control Intelligent tuning
reduce manual labor time by 50%
-- automatic control of air compressor
-- AI algorithm autonomous tuning
-- dynamic decision-making of equipment priority
-- intelligent control of auxiliary equipment
- 

Whole station energy saving Whole station energy saving
save the power consumption of 5-30%
-- edge computing technology
-- narrow band constant voltage technology
-- multi-parameter and multi constraint control algorithm
-- big data visualization technology



Digital station house
Station monitoring + control (computer) air compressor, cold dryer, suction dryer, water, fan, waste heat recovery machine, flow meter, electricity meter, etc Intelligent monitoring technology Based on the "Internet of Things"

Intelligent monitoring technology
Based on the "Internet of Things" intelligent control technology, the product has the ability to transport parameters through cloud technology, and our users can achieve it through computers or mobile phone apps.

