


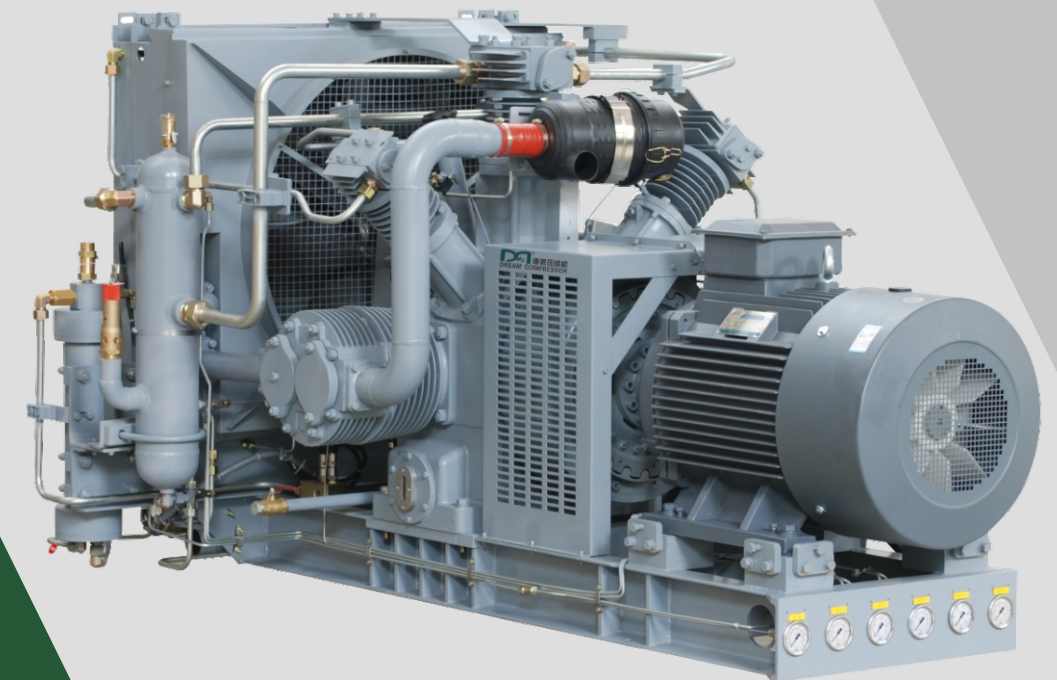


Medium & High Pressure Piston Compressor

CONTACT US

 Tel:0086-13671551445
 Email:sales@dmcomp.com
 www.dreamcompressor.com (English)
www.dmcomp.com (Chinese)



Professional Air Compressor Solution Provider



International Sales & Operation Center :
Room 316, 3rd Floor, Building 1, Lane 288, Rongxing Road, Zhongshan Street, Songjiang District, Shanghai, China
Zhejiang Manufacturing Center :
No. 916, Chuangzhi Road, Xindai Town, Pinghu City, Jiaxing City, Zhejiang Province, China

Specifications are subject to change without notice due to improvement in performance. Anything needed please contact us.

Stability | Energy Saving | Efficiency | Silence

Energy Saving Enhances Value, Ingenuity Creates the Future!

Dream Compressor

Create the first brand of energy- saving silent air compressor



*Stability
Engery Saving*



About US

For more than a decade, Dream (Shanghai) Compressor Co., Ltd has been striving to become one of the leading manufacturers of compressed air solutions in China.

The dream is located in Xingta industrial zone, Shanghai Jinshan district with 25,000 square meter factory coverage, is specialized in designing, manufacturing and sales of air compressors and air treat-ment systems with an annual capacity of 10, 000 units. Through years of efforts, its products have won wide recognition and acclaim from the domestic and oversea markets for high performance and reliability, durability and customer care.

The company fully complies with international standards in its production and management and has acquired (Quality Assurance) certificates of ISO9001, CE Certificate for European Market, UL & ASME

certificate for United States market and Class O certificate from TUV for our oil-free screw compressors.as well as a variety of other certificates in terms of environmental protection, safety, and electrical engineering.

- Our product lines covering the following areas:
- Oil-injected rotary screw compressors (Fixed speed and variable speed; high, normal and low pressure)
- Portable screw air compressors (Diesel-powered and electric motor powered)
- Oil-free air compressors (dry type, water-lubricated type)
- High-pressure piston air compressors (Oil-injected and oil-free)
- Air treatment equipment (Air dryers, air filters and air storage tank)

Certificates



Dream Compressor has always been a leader in the field of compressor technology, and its products include fixed screw air compressors, mobile screw compressors, piston air compressors, air dryers, precision filters, etc., which are widely used in various industries , Dream oil-free full range of products have gained the German Rhine class 0 certification. Dream company has become the premier supplier of screw compressors and piston machines with its rich experience and continuous innovation technology. After efforts, Dream has been successfully accepted by the mainland market with a good reputation.



Covering 17 product series, 500+ products for customers to select, one-stop air compressor solution provider for various industries.



Medium & High Pressure Piston Compressor

01 Cooling:

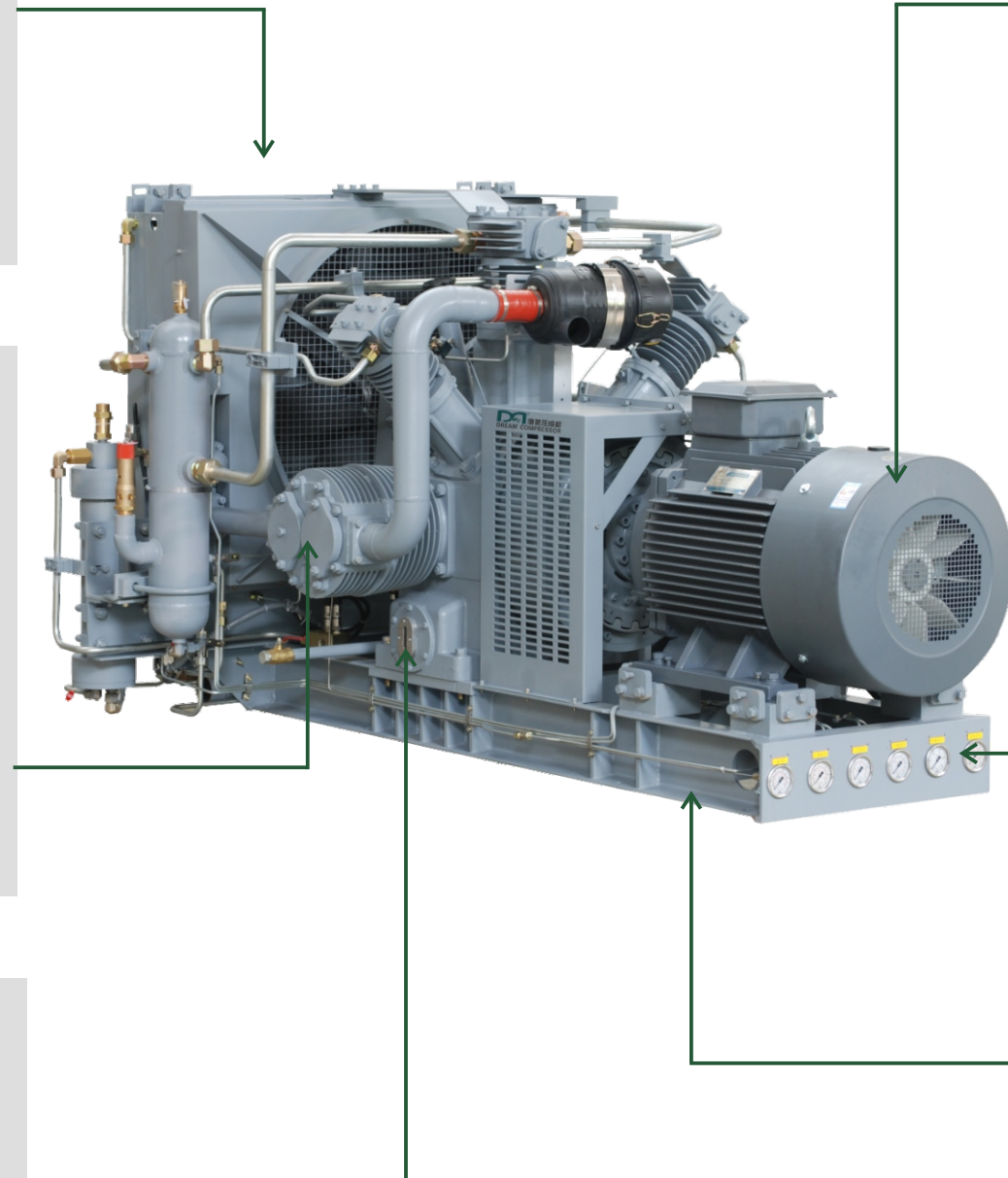
1. Efficient cooling system, low exhaust temperature.
2. Air-cooled/water-cooled coolers can be configured flexibly according to application requirements;
3. The interstage cooler and the final stage cooler are integrated as a whole. The main shaft drives the fan to carry out forced cooling on the cooler and the air end;
4. Each compression stage is equipped with a cooler and condensate drain device.

02 Air end:

1. Air-cooled air end. Designed for complex and demanding application environments such as high-pressure air and gas;
2. Multi-stage compression reduces the load of each stage. Single-action, deep-finned cylinders increase the reliability of unit operation;
3. The heavy-duty imported filter is equipped with a silencer. It can clean the air or other gases entering the system. The filter is carefully selected in order to adapt to the operating conditions under special circumstances.

03 Lubricating:

1. The oil pump drives the lubrication system to provide perfect lubrication and cooling for each moving part;
2. The pressure of the lubricating oil system is strictly monitored to ensure the lubrication of the unit;
3. The oil filter precisely filters the lubricating oil to ensure the safety of the unit.



04 Motor:

1. Specialized motor, imported brand bearings, protection class IP54, insulation class F, suitable for harsh environments such as heavy dust and high temperature;
2. IE3 high-efficiency motor uses less electricity and reduces your cost of use;
3. The motor has a large margin design and a large starting torque, which can meet the requirements of full life use under various working conditions.

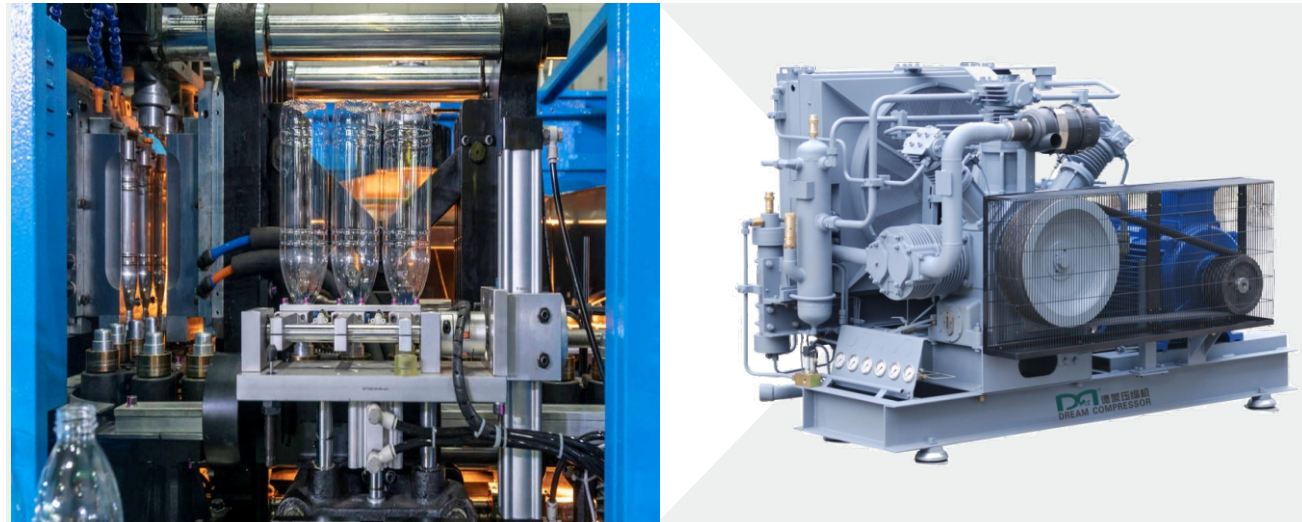
05 Control System:

Provide standard control system, the compressor can work efficiently and stably regardless of continuous operation or intermittent operation.

06 Skid table:

1. The compressor is fixed on the load-bearing chassis, which can adapt to changing needs;
2. The unit is perfectly balanced, no special installation foundation is needed, the work is more stable, and the working life of the components is improved.

Application



From the compressor to the entire compression system, Dream Compressor offers diversified products and service to meet customers' one-stop purchase needs

A variety of product meets diverse application requirements.

Our machine design is suitable for continuous operation requirements in harsh environment.

Air-cooled/water-cooled coolers can be flexibly configured according to customer needs.



Industrial application

- Hydropower station
- National Defense Industry
- High pressure detection
- Wind tunnel
- Pressure vessel test
- PET-Blow blowing

Application



Hydropower industry:

The main application of high-pressure air compressors in hydropower stations: Supplement high-pressure air to the oil pressure device of the governor. The pressure required by the governor device is generally 3.5-8.0MPa, and the required compressed air flow is generally 1.15-1.25 times the actual required flow. In the storage hydropower station, the water turbine is turned on to pump water upstream, and a large-displacement high-pressure machine is generally used to discharge water to reduce the starting resistance. The air-cushion room of the air-cushion surge tank of the hydropower station is inflated and supplemented. Switching gas source of high voltage switch, etc.



Bottle blowing industry:

Environment-friendly plastic made of PET material is commonly used. Thermoplastic resin by extrusion or injection molding of plastic parison tube, hot (or heated to softening state), put in split cavity, mold closing immediately after within the parison ventilation with compressed air, compressed air is to make the action of molten material at full stretch, close to the mould wall, make the bottle full forming, carries on the transverse tensile at the same time, improve the transverse strength. Make the plastic billet blow and close to the inner wall of the mold, after cooling demoulding, that is to get a variety of hollow products. On the market, the type of large displacement medium and high pressure compressor unit mainly has multi-stage compression large piston machine or multi-unit parallel use and so on.



Military industry:

In the military industry, air compressors are widely used in the transportation of chemical raw materials, the filling of hazardous liquids, the packaging of explosives, the automatic control devices of torpedoes, and the automation equipment of ships. The military high-pressure air compressor is a machine that compresses gas to increase gas pressure or convey gas. It compresses air in a free state to compressed air with a gauge pressure of 15-25MPa. The air flows through the separator and filter in the unit. After the device, the oil and impurities contained in the high-pressure air are removed, so that the discharged gas is clean and odorless, which meets the needs of various mechanized control. It is used for artillery, tanks, armored vehicles, chemical defense vehicles, emergency repair vehicles and other gas cylinders and gas tanks. The high-pressure air supply requirements are required to provide a safe and reliable source of high-pressure air supply.



Testing industry:

Mainly used for air tightness inspection, pipeline strength test, pressure test, air tightness test, pipeline purge, and safety valve verification and pressure resistance of various high-pressure gas cylinders, valves and pipelines, thereby eliminating various safety Hidden dangers.

Customer Service And Support

▲ As an air compressor manufacturer, we are steadily moving towards service providers and creating value for customers, make our customers successful.

● Ensure the safe and stable operation of customer equipment and solve user's problems promptly. ● Training customer operation personnel and service personnel. ● Feedback information ● Track corrective actions ● Aircompressor Failure Report and Repair Process.

Response Time: We promise to get back to you within 24 hours.

Service Hotline: whatsapp/skype/wechat: +86 13482161490.



Air Compressor System Solution

Dream Air Compressor is committed to providing compressor overall solutions and one-stop services to meet the needs of various industries for high-quality compressed air.

In an air compressor system, in addition to an air compressor to produce compressed air, after treatment equipment is also required to cool, dry and purify the air. Generally speaking, the commonly used air compressor after treatment equipment includes air tanks, precision filters and air dryers.

The main function of the screw air compressor air tank:
The compressed air from the screw air compressor cannot be put into production immediately, and it needs to be temporarily stored in an air tank. The main functions of the air storage tank are buffering, cooling, water removal, and oil removal. When the air passes through the air tank, the high-speed airflow hits the wall of the air tank to generate confluence, and the temperature in the air tank is rapidly reduced, so that a large amount of water vapor is liquefied, thereby removing a large amount of water and oil.

The main function of the prefilter of the screw air compressor:
Because the air in the atmosphere contains a lot of solid particles, oil molecules, dust and impurities. After compressed air, the concentration of solid particles and other impurities will greatly increase. At this time, a prefilter is needed to purify the compressed air. The main function of the prefilter is to remove some liquid water, oil and large-diameter particles. Regardless of the type of air dryer used in after treatment equipment, the prefilter is mandatory. Otherwise, once the rust and other particles on the pipeline enter the evaporator, the working efficiency of the refrigeration dryer will be greatly reduced, or even Damage to the evaporator.

The main function of the air dryer:
In addition to a large number of particles and impurities, compressed air also contains a large number of water molecules. The main function of the air dryer is to reduce the water content in the compressed air, by condensing and cooling water into liquid water, reducing the water content in the compressed air to the required range.

The main function of the post filter:
Through stacking of multi-layer epoxy resin bonded mixed fiber media and filter screens collect oil mist and filter out solid particles, further reducing the oil content, reducing the content of solid particles in the compressed air, so that the compressed air can reach a higher standard.



Medium & High Pressure Piston Compressor

DMH 系列 DMH Series	排气量 Capacity		排气压力 Working pressuer		功率 Power		机组净重 (Kg) Unit net weight (Kg)	外观尺寸 长*宽*高 (mm) Dimensions L*W*H (mm)	备注 Note
	m³/min	cfm	bar	psig	Kw	hp			
DMH-0.7/30Y	0.7	24.7	30	435.1	7.5	10	350	1500*530*1020	可移动固定可选储气罐容积 170L Movable fixed optional storage tank volume 170L
DMH-0.75/25Y	0.75	26.5	25	362.6	7.5	10	350	1500*530*1020	可移动固定可选储气罐容积 170L Movable fixed optional storage tank volume 170L
DMH-0.8/40Y	0.8	28.3	40	580.2	11	15	550	1400*700*1050	可移动固定可选储气罐容积 160L Movable fixed optional storage tank volume 160L
DMH-1.0/40Y	1	35.3	40	580.2	11	15	580	1400*700*1050	可移动固定可选储气罐容积 340L Movable fixed optional storage tank volume 340L
DMH-0.6/60Y	0.6	21.2	60	870.2	11	15	550	1400*700*1050	可移动固定可选储气罐容积 160L Movable fixed optional storage tank volume 160L
DMH-0.8/60Y	0.8	28.3	60	870.2	11	15	550	1400*700*1050	可移动固定可选储气罐容积 340L Movable fixed optional storage tank volume 340L
DMH-1.2/30	1.2	42.4	30	435.1	15	20	450	1500*820*1050	固定式 Stationary type
DMH-1.5/30Y	1.5	53.0	30	435.1	5	20	550	1500*820*1050	可移动固定可选储气罐容积 160L Movable fixed optional storage tank volume 160L
DMH-2.0/30	2	70.6	30	435.1	22	30	780	1650*870*1150	固定式 Stationary type
DMH-2.0/40	2	70.6	40	580.2	22	30	820	2000*900*1150	固定式 Stationary type
DMH-2.4/30	2.4	84.8	40	580.2	2*15	2*20	800	1900*1700*1150	二级压缩组合固定式 Double-stage compression combination fixed
DMH-3/30	3	105.9	30	435.1	2*15	2*20	900	1900*1700*1150	二级压缩组合固定式 Double-stage compression combination fixed
DMH-4/30	4	141.3	30	435.1	2*22	2*30	1500	1900*2000*1250	二级压缩组合固定式 Double-stage compression combination fixed
DMH-6/30	6	211.9	30	435.1	3*22	3*30	2200	2100*2100*1250	二级压缩组合固定式 Double-stage compression combination fixed
DMH-4.0/40	4	141.3	40	580.2	2*22	2*30	2000	2100*2100*1250	三级压缩组合固定式 Trible-stage compression combination fixed

Dream Compressor Specifications follow the principle of the followings:
1.The value of the capacity is the air volume flow under the following conditions (temperature: 32℃, atmospheric pressure: 101.325KPa).
2.The noise value is the value in the room without echo, the test tolerance: 3dB(A).

Medium & High Pressure Piston Compressor

DMH 系列 DMH Series	排气量 Capacity		排气压力 Working pressuer		功率 Power		机组净重 (Kg) Unit net weight (Kg)	外观尺寸 长*宽*高 (mm) Dimensions L*W*H (mm)	备注 Note
	m³/min	cfm	bar	psig	Kw	hp			
DMH-6/40	6	211.9	40	580.2	3*22	3*30	2800	4800*2000*1850	固定式 Stationary type
DMH-10/40	10	353.1	40	580.2	132	175	800	4600*2200*2300	直联无油水冷固定式 Stationary type direct connection oil free water-cooled
DMH-1.5/60	1.5	53.0	60	870.2	2*11	2*15	900	1800*800*1600	三级压缩组合固定式 Trible-stage compression combination fixed
DMH-1/150	1	35.3	150	2175.6	18.5	25	700	1800*1300*1500	皮带固定式 Belt fixed
DMH-1.5/150	1.5	53.0	150	2175.6	30	40	1000	1800*1200*1300	直联固定式 Direct fixed
DMH-3/60	3	105.9	60	870.2	37	50	2500	2360*1400*1500	固定式 Stationary type
DMH-2/150	2	70.6	150	2175.6	30	40	1100	1800*1200*1300	直联固定式 Direct fixed
DMH-5/150	5	176.6	150	2175.6	90	120	2500	3000*1500*1500	固定式 Stationary type
DMH-1.5/250	1.5	53.0	250	3625.9	30	40	1100	1800*1200*1300	直联固定式 Direct fixed
DMH-4/250	4	141.3	250	3625.9	75	100	2800	2800*1500*1500	直联固定式 Direct fixed
DMH-5/250	5	176.6	250	3625.9	75	100	2900	3000*1500*1500	直联固定式 Direct fixed
DMH-10/250	10	353.1	250	3625.9	185	250	5000	4500*2200*2300	皮带固定式 (高配) Belt fixed(high configuration)
DMH-1.5/350	1.5	53.0	350	5076.3	37	50	2000	1850*1690*1500	皮带固定式 (高配) Belt fixed(high configuration)
DMH-2/350	2	70.6	350	5076.3	45	60	2100	2600*1500*1400	皮带固定式 (高配) Belt fixed(high configuration)
DMH-3/350	3	105.9	350	5076.3	55	75	2600	2600*1500*1400	直联固定式 Direct fixed
DMH-2/400	2	70.6	400	5801.5	55	75	2600	2600*1500*1400	直联固定式 Direct fixed

3.Please consult our company for use in harsh working conditions such as with high temperature, extreme humidity, extreme cold and dust,etc.
4.Dimensions and weight of the whole machine are subject to change without notice.
5.Please do not use compressed air directly in medical equipment for human inhalation.